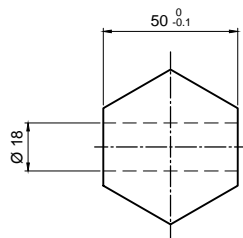


OUTPUT SHAFT



TECHNICAL DATA

DESCRIPTION: PG 101 PE 5.60 531700

PLANETARY GEARBOX

RATIO $i = 5.60$
 CONT TORQUE 80 daNm
 MAX TORQUE 160 daNm
 INPUT SPEED max2800rpm
 LUBRICANT ISO 3448
 OIL QUANTITY 1.5 l

BRAKE

TYPE
 BRAKING TORQUE Min.
 RELEASE PRESSURE Min.
 MAX PRESSURE
 LUBRICANT
 OIL QUANTITY

MOTOR FITTINGS

DESCRIPTION 531700
 40X36 25-CH.8 2+4M12

MOTOR

TYPE: MR
 PART. N.
 DISPLACEMENT

	BREATHER PLUG		DRAIN PLUG
	FILLING PLUG		ELBOW
	LEVEL PLUG		EXTENSION

PART. N. 5708.EDRE194

PAINT COLOR

CUSTOMER

WEIGHT 21 Kg

MOUNTING POSITION V1

Haumea S.r.l. - Via Nicola Sacco, 12 - 47122 Forlì (FC) ITALY - Tel. +39 0543 779518



DATE

SGN.

N.DIS